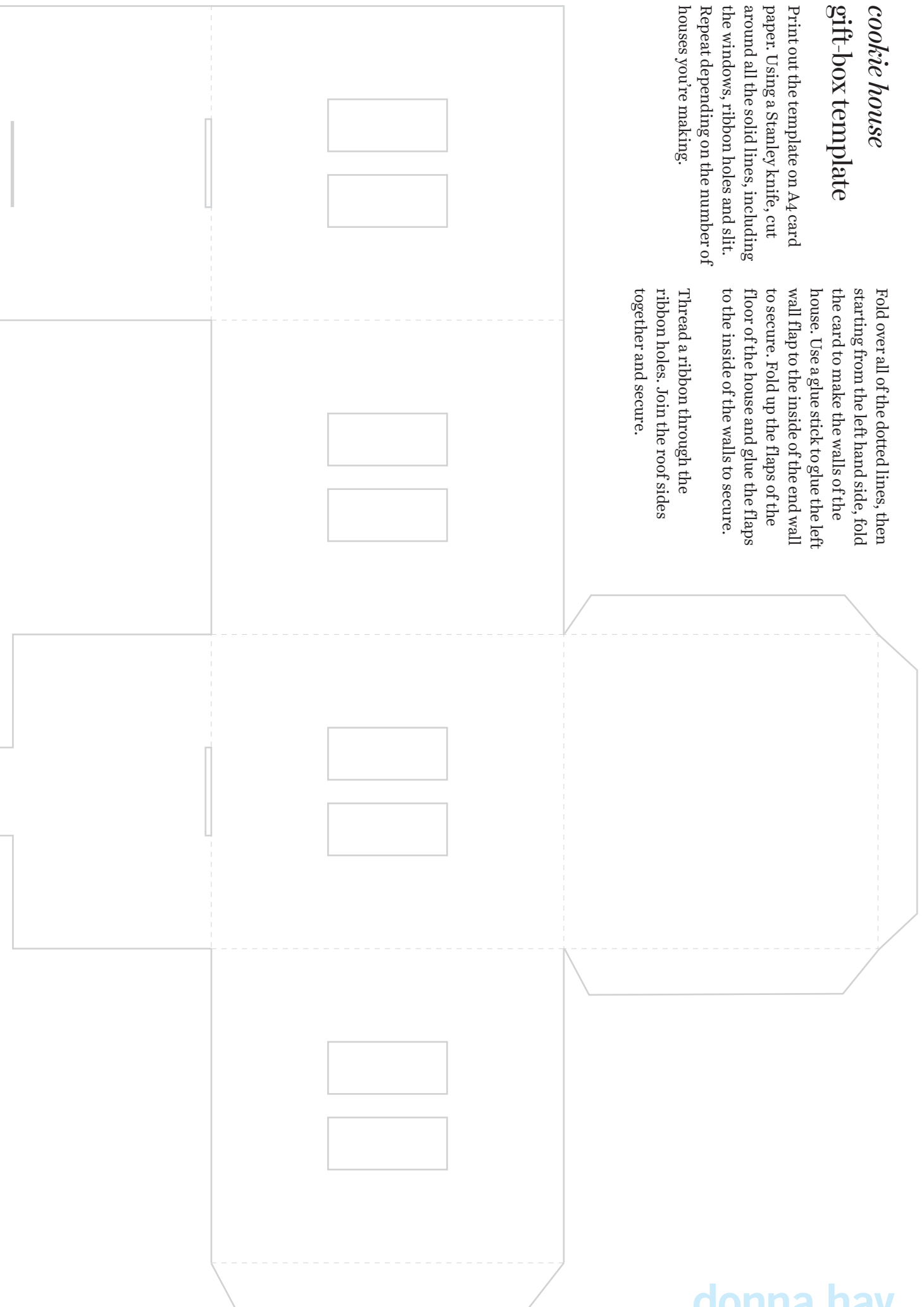


cookie house gift-box template

Print out the template on A4 card paper. Using a Stanley knife, cut around all the solid lines, including the windows, ribbon holes and slit. Repeat depending on the number of houses you're making.

Fold over all of the dotted lines, then starting from the left hand side, fold the card to make the walls of the house. Use a glue stick to glue the left wall flap to the inside of the end wall to secure. Fold up the flaps of the floor of the house and glue the flaps to the inside of the walls to secure.

Thread a ribbon through the ribbon holes. Join the roof sides together and secure.



27.2cm